

# Hybrid Solar Inverter FTS Series



### Smart Control

Five smart control mode, auto switch for different demand



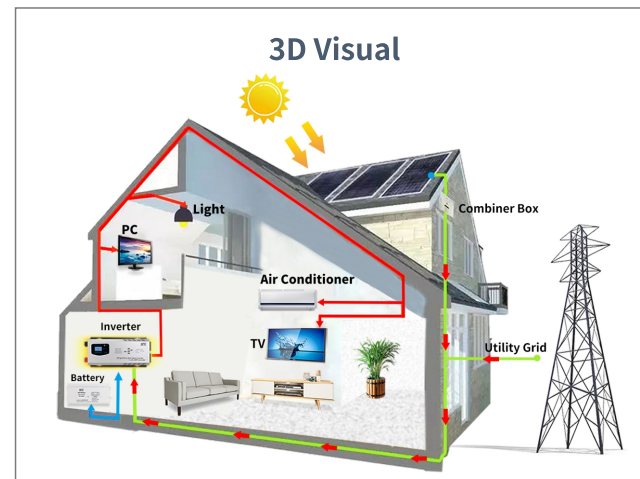
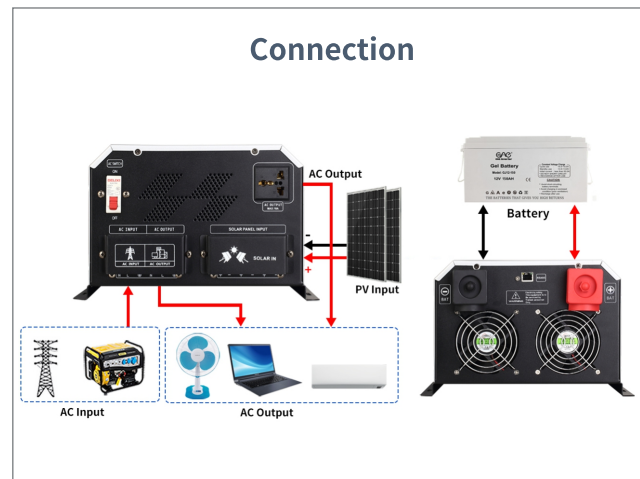
### Stable & Durable

Inbuilt toroidal transformer, triple surge power, stabilize power, stable and durable.



### Battery Type

Support SLA/AGM/GEL/lithium lifepo4 battery



# Technical Specification

Model	FTS-152	FTS-202	FTS-302	FTS-402	FTS-502	FTS-602
Rated power	1.5KW	2KW	3KW	4KW	5KW	6KW
Surge power	4.5KW	6KW	9KW	12KW	15KW	18KW
<b>AC Input &amp; Output</b>						
Voltage	220VAC					
Selectable Voltage Range	165-275VAC (220VAC)					
Frequency Range	50Hz/60Hz automatic recognition					
AC Voltage Regulation (BATT. Mode)	(DC Batt.mode)220vac±3%					
Transfer Time	≤4ms					
Wave Form	Pure Sine Wave					
Transformer type	Toroidal					
Transfer efficiency	≥85%					
<b>Battery</b>						
Battery Voltage	12V/24V	12V/24V/48V		24V/48V		
Type	Gel/SLA/AGM/Water/Lithium(lifepo4) Battery					
DC Charge Voltage	12~16VDC(12V)/20~32VDC(24V)/40~64VDC(48V)					
Overcharge Protection	Battery voltage ≥16VDC (12V) ≥32VDC (24V) ≥64VDC (48V), stop charging after 60s alarm					
<b>Solar Charge &amp; Ac Charger</b>						
Maximum PV Array Open Circuit Voltage	150VDC					
Maximum Pv Array Power	900W(12V)/1700W(24V)/3400W(48V)					
Maximum Ac Charge Current	35A(adjustable)					
Maximum Solar Charge Current	30/60AMPPT (OPTIONAL)		60A MPPT			
Maximum Charging Current	95A		95A			
<b>Working mode</b>						
01 mode	AC mains priority mode					
02 mode	ECO mode					
03 mode	DC battery priority mode					
04 mode	Generator mode					
05 mode	Unattended mode					
<b>Communication Port</b>						
Type	RS485					
<b>Physical</b>						
Dimension, D*W*H(MM)	600*380*280			780*380*280		
G.W.(KGS)	19	21	23	30	32	36
<b>Environment</b>						
Humidity	0~95%( NO CONDESNSATION)					
Operating Temperature	0~60°C					
Storage Temperature	0~60°C					

\*Product Specifications Are Subject To Change Without Further Notice